



# FIND YOUR TRUE COLORS

---

**melco** X **COLOREEL**®

[melco.com/coloreel](https://melco.com/coloreel)



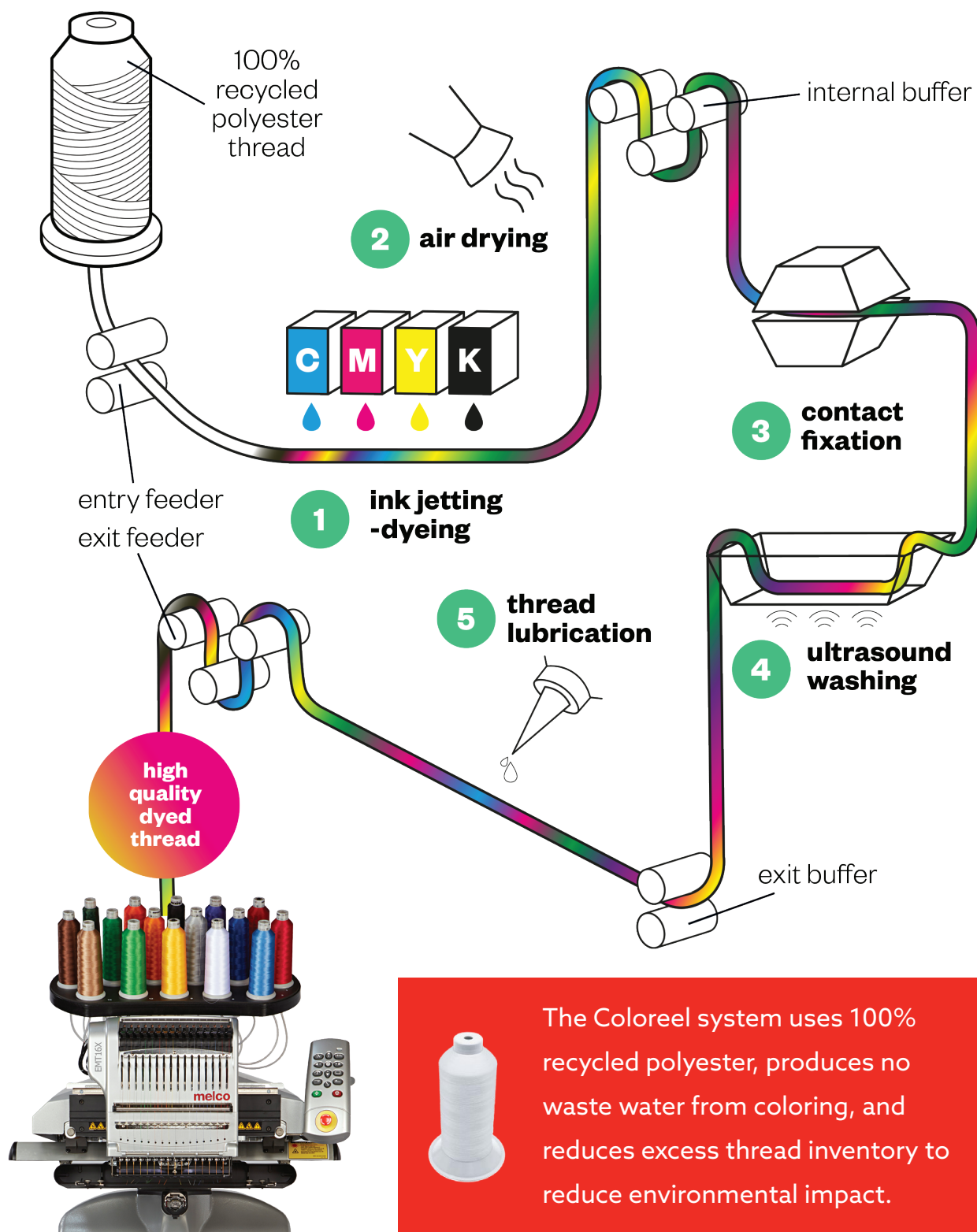
# melco X COLOREEL<sup>®</sup>

*Experience the bleeding  
edge of machine embroidery  
technology when you combine  
Melco and Coloreel.*



# WHAT IS IT?

Coloreel's state-of-the-art on-demand thread dyeing technology ensures vibrant, consistent, and lasting color that is rapidly processed and dried to keep up the high-speed stitching of the Melco EMT16X.



The Coloreel system uses 100% recycled polyester, produces no waste water from coloring, and reduces excess thread inventory to reduce environmental impact.



# BETTER WITH MELCO

Get the most out of Coloreel on-demand thread dyeing with Melco technology and modularity.

## Melco's Acti-Feed™ Advantage

Coloreel's innovative coloring system, which utilizes a single thread and needle, places great emphasis on achieving remarkable results through consistency and precision in thread placement. The key to this precision lies in Melco's Acti-Feed™ auto-tensioning, guaranteeing that color transitions occur precisely as intended, irrespective of the fabric type.

## A Better Fit For You

Melco's EMT16X Modular System offers the flexibility of adding and managing each embroidery head separately. Unlike conventional multi-head configuration, this means you have the freedom to utilize Coloreel with only the specific heads you require, eliminating the necessity for a Coloreel attachment for each machine head. By dedicating a Coloreel head for intricate designs exceeding 16 colors, your other machines can handle larger projects efficiently.

## Maximum Performance

Turbocharge your turnaround when you combine the EMT16X's amazing speed with Coloreel's ability to eliminate thread changes and excess trims and tie-offs.

The included **Coloreel Studio** software has been designed with simplicity and ease-of-use in mind, allowing you to quickly and easily modify digitized designs to utilize the Coloreel system.

